



# Sheringham Shoal and Dudgeon Offshore Wind Farm Extension Projects

Environmental Statement

## Volume 2

### Chapter 26 - Landscape and Visual Impact Assessment

August 2022

Document Reference: 6.2.26

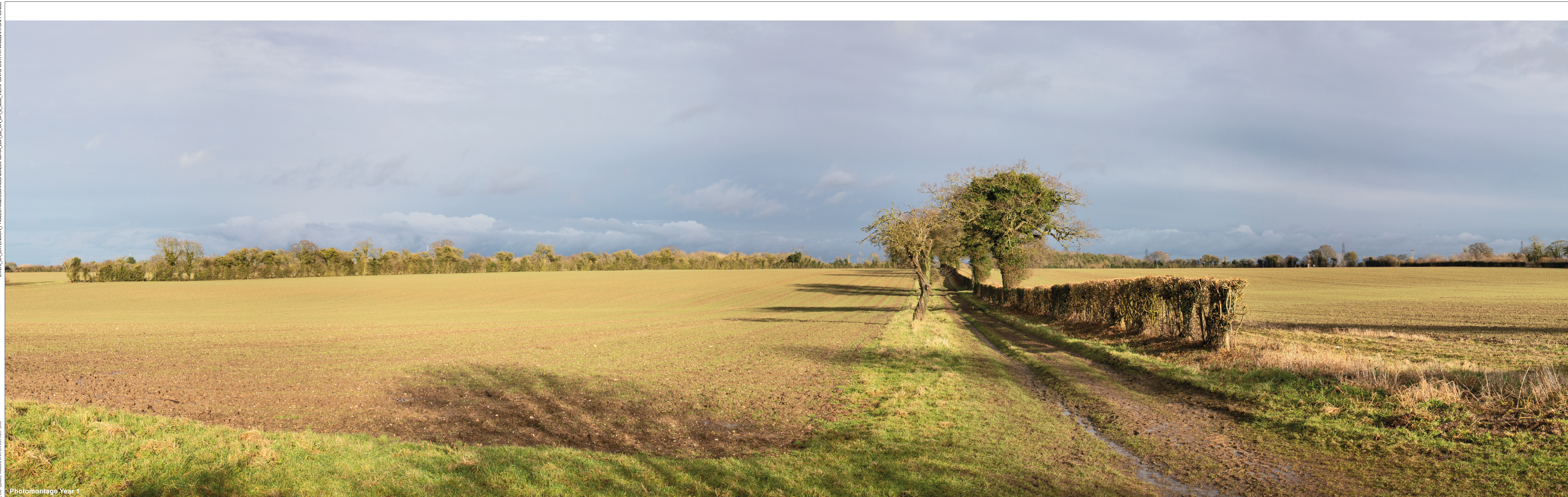
APFP Regulation: 5(2)(a)

Title: <b>Sheringham Shoal and Dudgeon Offshore Wind Farm Extension Projects                  Environmental Statement (Volume 2)                  Chapter 26: Landscape and Visual Impact Assessment Figures (Part 14 of 20)</b>	
PINS Document No.: 6.2.26	
Document No.: C282-RH-Z-GA-00004	
Date: <b>August 2022</b>	
Classification: <b>Final</b>	
Prepared by: <b>Royal HaskoningDHV</b>	
Approved by: <b>Sarah Chandler, Equinor</b>	Date: August 2022

### List of Figures

26.21: Viewpoint 5 – Footpath (Mulbarton FP8) Part 2



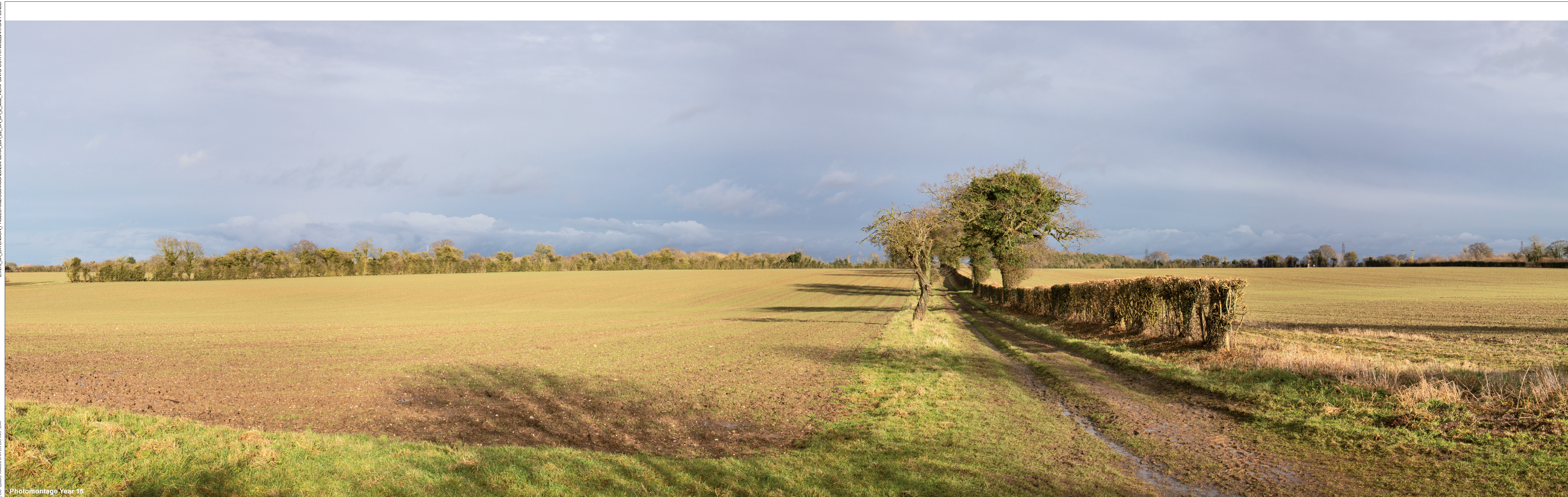


Photomontage Year 1

	Camera Location (OS Grid Reference):	619710 E 301303 N	Horizontal Field of View:	90° (Cylindrical projection)	Photo Date / Time:	18/02/2021 15:11	<p><b>NOTES</b></p> <p>The 3D substation photomontage is indicative and not based on an accurate design. The photomontage allows for screening effects of existing landform, vegetation and development, in addition to proposed mitigation planting. The mitigation planting design is set out in document '9.18, Outline Landscape Management Plan'. The photomontage is based on LIDAR 2m digital terrain data, which does not precisely model small scale changes in landform or sharp breaks in slope.</p>		<p><b>COPYRIGHT</b></p> <p>Ordnance Survey material by permission of Ordnance Survey on behalf of the Controller of Her Majesty's Stationary Office © Crown Copyright. All rights reserved. 2020 Reference number 0100031673.</p>		<p><b>Sheringham Shoal and Dudgeon Extension Projects</b></p> <p>DOCUMENT: Environmental Statement (ES) Chapter 26 Landscape and Visual Impact Assessment APPLICATION DOC. NO.: 6.2.26</p>	<p>Figure 26.21 Viewpoint 5 - Footpath (Mulbarton FP8)</p> <p>EQUINOR DOC. NO.: G282-LD-Z-GA-00004 RHDHV DOC. NO.: PB8164_LDA_ZZ_ON_DR_Z_0056 REV: A    DATE: 11/07/2022    STATUS: First Issue    DRW: VW    CHK: NA    APR: CG</p>	<p>Sheet 1 of 1</p>
	Ground Level (mAOD):	39.8m	Paper Size:	841mm x 297mm (Half A1)	Camera Model and Sensor Format:	Canon EOS 6D Mark II, FFS							
	Direction of View: bearing from North (0°):	68°	Enlargement Factor:	96%	Lens Make, Model and Focal Length:	Sigma 50mm f1.4							
	Distance to Substation:	2.0km	Visualisation Type:	Type 3	Height of Camera Lens above Ground (mAOD):	1.5m							



Z:\7273\_LK\_EXTENSION\_PROJECTS\BDOCS\VISUAL\SES\PB8164\_LDA\_ZZ\_ON\_DR\_Z\_0056\_VIEWPOINTS\FOOTPATH\MULBARTON\FP8\INDO



Photomontage Year 15



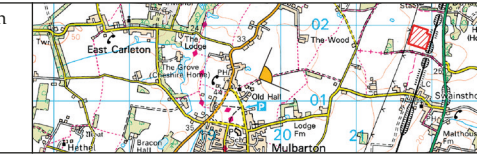
Camera Location (OS Grid Reference): 619710 E 301303 N  
 Ground Level (mAOD): 39.8m  
 Direction of View: bearing from North (0°): 68°  
 Distance to Substation: 2.0km

Horizontal Field of View: 90° (Cylindrical projection)  
 Paper Size: 841mm x 297mm (Half A1)  
 Enlargement Factor: 96%  
 Visualisation Type: Type 3

Photo Date / Time: 18/02/2021 15:11  
 Camera Model and Sensor Format: Canon EOS 6D Mark II, FFS  
 Lens Make, Model and Focal Length: Sigma 50mm f1.4  
 Height of Camera Lens above Ground (mAOD): 1.5m

**NOTES:**  
 The 3D substation photomontage is indicative and not based on an accurate design. The photomontage allows for screening effects of existing landform, vegetation and development, in addition to proposed mitigation planting. The mitigation planting design is set out in document '9.18, Outline Landscape

Management Plan'. The photomontage is based on LIDAR 2m digital terrain data, which does not precisely model small scale changes in landform or sharp breaks in slope.



**COPYRIGHT**  
 Ordnance Survey material by permission of Ordnance Survey on behalf of the Controller of Her Majesty's Stationary Office © Crown Copyright. All rights reserved. 2020 Reference number 0100031673.



**Sheringham Shoal and Dudgeon Extension Projects**  
 DOCUMENT: Environmental Statement (ES)  
 Chapter 26 Landscape and Visual Impact Assessment  
 APPLICATION DOC. NO.: 6.2.26

Figure 26.21  
**Viewpoint 5 - Footpath (Mulbarton FP8)**  
 EQUINOR DOC. NO.: G282-LD-Z-GA-00004  
 RHDHV DOC. NO.: PB8164\_LDA\_ZZ\_ON\_DR\_Z\_0056  
 REV: A DATE: 11/07/2022 STATUS: First Issue DRW: VW CHK: NA APR: CG